

## Gewindestutzen - Draadstuk DIN 11864-1

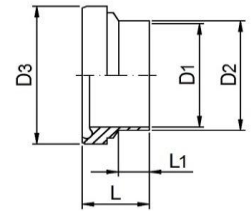
DIN	B	C	A	E		Art. Nr.
						<b>316L</b>
DN 10	13.00	10.00	41.0	Rd 28x1/8"	Reihe A-DIN	113864A0103
DN 15	19.00	16.00	41.0	Rd 34x1/8"	Reihe A-DIN	113864A0153
DN 20	23.00	20.00	43.0	Rd 44x1/6"	Reihe A-DIN	113864A0203
DN 25	29.00	26.00	43.0	Rd 52x1/6"	Reihe A-DIN	113864A0253
DN 32	35.00	32.00	48.0	Rd 58x1/6"	Reihe A-DIN	113864A0323
DN 40	41.00	38.00	48.0	Rd 65x1/6"	Reihe A-DIN	113864A0403
DN 50	53.00	50.00	48.0	Rd 78x1/6"	Reihe A-DIN	113864A0503
DN 65	70.00	66.00	60.0	Rd 95x1/6"	Reihe A-DIN	113864A0653
DN 80	85.00	81.00	64.0	Rd 110x1/4"	Reihe A-DIN	113864A0803
DN 100	104.0	100.0	64.0	Rd 130x1/4"	Reihe A-DIN	113864A1003

### Inch/Zoll

1/2"	12.70	09.40	41.0	Rd 28x1/8"	Reihe C-Inch	113864C0123
3/4"	19.05	15.75	41.0	Rd 34x1/8"	Reihe C-Inch	113864C0343
1.0"	25.40	21.10	43.0	Rd 52x1/6"	Reihe C-Inch	113864C1003
1.5"	38.10	34.80	48.5	Rd 65x1/6"	Reihe C-Inch	113864C1123
2.0"	50.80	47.50	48.5	Rd 78x1/6"	Reihe C-Inch	113864C2003
2.5"	63.50	60.20	60.0	Rd 95x1/6"	Reihe C-Inch	113864C2123
3.0"	76.20	72.90	64.0	Rd 110x1/4"	Reihe C-Inch	113864C3003
4.0"	101.6	97.38	64.0	Rd 130x1/4"	Reihe C-Inch	113864C4003

### ISO

DN 08 ISO	13.50	10.30	41.0	Rd 28x1/8"	Reihe B-ISO	113864B0083
DN 10 ISO	17.20	14.00	41.0	Rd 34x1/8"	Reihe B-ISO	113864B0103
DN 15 ISO	21.30	18.10	43.0	Rd 44x1/6"	Reihe B-ISO	113864B0153
DN 20 ISO	26.90	23.70	43.0	Rd 52x1/6"	Reihe B-ISO	113864B0203
DN 25 ISO	33.70	29.70	48.0	Rd 58x1/6"	Reihe B-ISO	113864B0253
DN 32 ISO	42.40	38.40	48.0	Rd 65x1/6"	Reihe B-ISO	113864B0323
DN 40 ISO	48.30	44.30	49.0	Rd 78x1/6"	Reihe B-ISO	113864B0403
DN 50 ISO	60.30	56.30	60.0	Rd 95x1/6"	Reihe B-ISO	113864B0503
DN 65 ISO	76.10	72.10	64.0	Rd 110x1/4"	Reihe B-ISO	113864B0653
DN 80 ISO	88.90	84.30	64.0	Rd 130x1/4"	Reihe B-ISO	113864B0803



## Bundstutzen Puntstukken DIN 11864-1

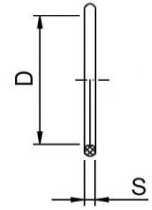
DIN	D2	D1	D3	L	L1		Art. Nr. 316L
DN 10	13.00	10.00	21.90	39.0	27	Reihe A-DIN	114864A0103
DN 15	19.00	16.00	27.90	39.0	27	Reihe A-DIN	114864A0153
DN 20	23.00	20.00	35.90	38.0	26	Reihe A-DIN	114864A0203
DN 25	29.00	26.00	42.90	40.0	26	Reihe A-DIN	114864A0253
DN 32	35.00	32.00	48.90	47.0	32	Reihe A-DIN	114864A0323
DN 40	41.00	38.00	54.90	47.0	31	Reihe A-DIN	114864A0403
DN 50	53.00	50.00	66.90	48.0	30	Reihe A-DIN	114864A0503
DN 65	70.00	66.00	84.90	61.0	40	Reihe A-DIN	114864A0653
DN 80	85.00	81.00	98.90	61.0	40	Reihe A-DIN	114864A0803
DN 100	104.0	100.0	118.9	66.0	40	Reihe A-DIN	114864A1003

### Inch/Zoll

1/2"	12.70	09.40	21.90	39.0	27	Reihe C-Inch	114864C0123
3/4"	19.05	15.75	27.90	39.0	27	Reihe C-Inch	114864C0343
1.0"	25.40	21.10	42.90	40.0	26	Reihe C-Inch	114864C1003
1.5"	38.10	34.80	54.90	46.5	30	Reihe C-Inch	114864C1123
2.0"	50.80	47.50	66.90	47.5	30	Reihe C-Inch	114864C2003
2.5"	63.50	60.20	84.90	63.0	40	Reihe C-Inch	114864C2123
3.0"	76.20	72.90	98.90	61.0	40	Reihe C-Inch	114864C3003
4.0"	101.6	97.38	118.9	65.0	40	Reihe C-Inch	114864C4003

### ISO

DN 08 ISO	13.50	10.30	21.90	39.0	27	Reihe B-ISO	114864B0083
DN 10 ISO	17.20	14.00	27.90	39.0	27	Reihe B-ISO	114864B0103
DN 15 ISO	21.30	18.10	35.90	40.0	27	Reihe B-ISO	114864B0153
DN 20 ISO	26.90	23.70	42.90	41.0	27	Reihe B-ISO	114864B0203
DN 25 ISO	33.70	29.70	48.90	47.0	32	Reihe B-ISO	114864B0253
DN 32 ISO	42.40	38.40	54.90	47.0	32	Reihe B-ISO	114864B0323
DN 40 ISO	48.30	44.30	66.90	48.0	31	Reihe B-ISO	114864B0403
DN 50 ISO	60.30	56.30	84.90	62.0	40	Reihe B-ISO	114864B0503
DN 65 ISO	76.10	72.10	98.90	61.0	40	Reihe B-ISO	114864B0653
DN 80 ISO	88.90	84.30	118.9	68.0	40	Reihe B-ISO	114864B0803



## O-Ring DIN 11864-1

DIN	D	S	Art. Nr.	
			EPDM	FPM
DN 10	12.00	3.5	111864A0100300	111864A0100400
DN 15	18.00	3.5	111864A0150300	111864A0150400
DN 20	22.00	3.5	111864A0200300	111864A0200400
DN 25	28.00	3.5	111864A0250300	111864A0250400
DN 32	34.00	5.0	111864A0320300	111864A0320400
DN 40	40.00	5.0	111864A0400300	111864A0400400
DN 50	52.00	5.0	111864A0500300	111864A0500400
DN 65	68.00	5.0	111864A0650300	111864A0650400
DN 80	83.00	5.0	111864A0800300	111864A0800400
DN 100	102.0	5.0	111864A1000300	111864A1000400
DN 125	127.0	5.0	111864A1250300	111864A1250400
DN 150	152.0	5.0	111864A1500300	111864A1500400

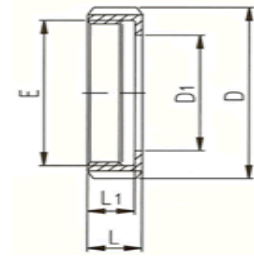
### Inch/Zoll

1/2"	12.00	3,5	111864C0120300	111864C0120400
3/4"	18.00	3,5	111864C0340300	111864C0340400
1.0"	24.00	3,5	111864C1000300	111864C1000400
1.5"	37.00	5.0	111864C1120300	111864C1120400
2.0"	50.00	5.0	111864C2000300	111864C2000400
2.5"	62.00	5.0	111864C2120300	111864C2120400
3.0"	75.00	5.0	111864C3000300	111864C3000400
4.0"	400.0	5.0	111864C4000300	111864C4000400

### ISO

DN 08 ISO	12.00	3.5	111864B0080300	111864B0080400
DN 10 ISO	16.00	3.5	111864B0100300	111864B0100400
DN 15 ISO	20.00	3.5	111864B0150300	111864B0150400
DN 20 ISO	26.00	3.5	111864B0200300	111864B0200400
DN 25 ISO	32.00	5.0	111864B0250300	111864B0250400
DN 32 ISO	40.50	5.0	111864B0320300	111864B0320400
DN 40 ISO	46.50	5.0	111864B0400300	111864B0400400
DN 50 ISO	58.50	5.0	111864B0500300	111864B0500400
DN 65 ISO	73.50	5.0	111864B0650300	111864B0650400
DN 80 ISO	85.50	5.0	111864B0800300	111864B0800400
DN 100 ISO	111.0	5.0	111864B1000300	111864B1000400

Ook leverbaar in PTFE, HNBR en VMQ



## Nutmutter - Wartelmoer Freistich

### DIN 11864-1

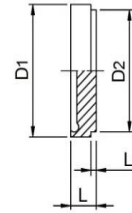
DN	D1	D	L1	L	E	Art. Nr.	
						304	316L
DN 10	19	38	15	18	Rd 28x1/8"	110000101	110000103
DN 15	25	44	15	18	Rd 34x1/8"	110000151	110000153
DN 20	31	54	17	20	Rd 44x1/6"	110000201	110000203
DN 25	36	63	18	21	Rd 52x1/6"	110000251	110000253
DN 32	42	70	18	21	Rd 58x1/6"	110000321	110000323
DN 40	49	78	18	21	Rd 65x1/6"	110000401	110000403
DN 50	62	92	19	22	Rd 78x1/6"	110000501	110000503
DN 65	80	112	21	25	Rd 95x1/6"	110000651	110000653
DN 80	94	127	25	29	Rd 110x1/4"	110000801	110000803
DN 100	115	148	26	31	Rd 130x1/4"	110001001	110001003

#### Inch/Zoll

1/2"	19	38	15	18	Rd 28x1/8"	110000101	110000103
3/4"	25	44	15	18	Rd 34x1/8"	110000151	110000153
1.0"	36	63	18	21	Rd 52x1/6"	110000251	110000253
1.5"	49	78	18	21	Rd 65x1/6"	110000401	110000403
2.0"	62	92	19	22	Rd 78x1/6"	110000501	110000503
2.5"	80	112	21	25	Rd 95x1/6"	110000651	110000653
3.0"	94	127	25	29	Rd 110x1/4"	110000801	110000803
4.0"	115	148	26	31	Rd 130x1/4"	110001001	110001003

#### ISO

DN ISO	D1	D	L1	L	E	Art. Nr.	
						304	316L
DN 10 ISO	25	44	15	18	Rd 34x1/8"	110000151	110000153
DN 15 ISO	31	54	17	20	Rd 44x1/8"	110000201	110000203
DN 20 ISO	36	63	18	21	Rd 52x1/6"	110000251	110000253
DN 25 ISO	42	70	18	21	Rd 58x1/6"	110000321	110000323
DN 32 ISO	49	78	18	21	Rd 65x1/6"	110000401	110000403
DN 40 ISO	62	92	19	22	Rd 78x1/6"	110000501	110000503
DN 50 ISO	80	112	21	25	Rd 95x1/6"	110000651	110000653
DN 65 ISO	94	127	25	29	Rd 110x1/4"	110000801	110000803
DN 80 ISO	115	148	26	31	Rd 130x1/4"	110001001	110001003



## Blind-Bund-Puntstuk DIN 11864-1

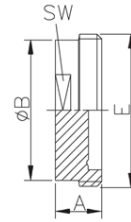
DN	D1	D2	L	L1	Art. Nr.
					316L
DN 10	21.90	18	9	3	118853A0103
DN 15	27.90	24	9	3	118853A0153
DN 20	35.90	30	10	3	118853A0203
DN 25	42.90	35	12	3	118853A0253
DN 32	48.90	41	13	3	118853A0323
DN 40	54.90	48	13	3	118853A0403
DN 50	66.90	61	14	3	118853A0503
DN 65	84.90	79	16	4	118853A0653
DN 80	98.90	93	16	4	118853A0803
DN 100	118.9	114	20	5	118853A1003

### Inch/Zoll

1/2"	21.90	18	9	3	118853A0103
3/4"	27.90	24	9	3	118853A0153
1.0"	42.90	35	12	3	118853C1003
1.5"	54.90	48	13	3	118853C1123
2.0"	66.90	61	14	3	118853C2003
2.5"	84.90	79	16	4	118853C2123
3.0"	98.90	93	16	4	118853C3003
4.0"	118.9	114	20	5	118853C4003

### ISO

DN 08 ISO	21.90	18	9	3	118853B0083
DN 10 ISO	27.90	24	9	3	118853B0103
DN 15 ISO	35.90	30	10	3	118853B0153
DN 20 ISO	42.90	35	12	3	118853B0203
DN 25 ISO	48.90	41	13	3	118853B0253
DN 32 ISO	54.90	48	13	3	118853B0323
DN 40 ISO	66.90	61	14	3	118853B0403
DN 50 ISO	84.90	79	16	4	118853B0503
DN 65 ISO	98.90	93	16	4	118853B0653
DN 80 ISO	118.9	114	20	5	118853B0803



## Blind Gewinde-Draad DIN 11864-1

DN	A	B	SW	E	Art. Nr.
					316L
DN 10	24	22	17		Rd 28x1/8" 117853A0103
DN 15	24	22	17		Rd 34x1/8" 117853A0153
DN 20	24	22	17		Rd 44x1/6" 117853A0203
DN 25	24	40	27		Rd 52x1/6" 117853A0253
DN 32	24	40	27		Rd 58x1/6" 117853A0323
DN 40	24	40	27		Rd 65x1/6" 117853A0403
DN 50	24	40	27		Rd 78x1/6" 117853A0503
DN 65	28	48	32		Rd 95x1/6" 117853A0653
DN 80	28	48	32		Rd 110x1/4" 117853A0803
DN 100	30	48	32		Rd 130x1/4" 117853A1003

### Inch/Zoll

1/2"	24	22	17		Rd 28x1/8" 117853C0123
3/4"	24	22	17		Rd 34x1/8" 117853C0343
1.0"	24	40	27		Rd 52x1/6" 117853C1003
1.5"	24	40	27		Rd 65x1/6" 117853C1123
2.0"	24	40	27		Rd 78x1/6" 117853C2003
2.5"	28	48	32		Rd 95x1/6" 117853C2123
3.0"	28	48	32		Rd 110x1/4" 117853C3003
4.0"	30	48	32		Rd 130x1/4" 117853C4003

### ISO

DN 08 ISO	24	22	17		Rd 28x1/8" 117853B0083
DN 10 ISO	24	22	17		Rd 34x1/8" 117853B0103
DN 15 ISO	24	22	17		Rd 44x1/6" 117853B0153
DN 20 ISO	24	40	27		Rd 52x1/6" 117853B0203
DN 25 ISO	24	40	27		Rd 58x1/6" 117853B0253
DN 32 ISO	24	40	27		Rd 65x1/6" 117853B0323
DN 40 ISO	24	40	27		Rd 78x1/6" 117853B0403
DN 50 ISO	28	48	32		Rd 95x1/6" 117853B0503
DN 65 ISO	28	48	32		Rd 110x1/4" 117853B0653
DN 80 ISO	30	48	32		Rd 130x1/4" 117853B0803