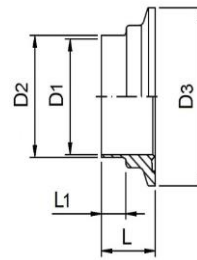


## Clamp koppeling DIN 11864-3

## Form A

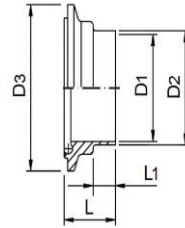
DIN	A	B	C	D	Art. Nr. 316L / EPDM
DN 10	76.00	13.00	10.00	34.00	185864A0103300
DN 15	76.00	19.00	16.00	34.00	185864A0153300
DN 20	76.00	23.00	20.00	50.50	185864A0203300
DN 25	77.00	29.00	26.00	50.50	185864A0253300
DN 32	88.00	35.00	32.00	50.50	185864A0323300
DN 40	88.00	41.00	38.00	64.00	185864A0403300
DN 50	89.00	53.00	50.00	77.50	185864A0503300
DN 65	113.0	70.00	66.00	91.00	185864A0653300
DN 80	117.0	85.00	81.00	106.0	185864A0803300
DN 100	120.0	104.0	100.0	130.0	185864A1003300
<b>INCH</b>					
1/2"	76.00	12.70	09.40	34.00	185864C0123300
3/4"	76.00	19.05	15.75	34.00	185864C0343300
1.0"	77.00	25.40	21.10	50.50	185864C1003300
1.5"	88.00	38.10	34.80	64.00	185864C1123300
2.0"	89.00	50.80	47.50	77.50	185864C2003300
2.5"	115.0	63.50	60.20	91.00	185864C2123300
3.0"	117.0	76.20	72.90	106.0	185864C3003300
4.0"	119.0	101.6	97.38	130.0	185864C4003300
<b>ISO</b>					
DN 08 ISO	76.00	13.50	10.30	34.00	185864B0083300
DN 10 ISO	76.00	17.20	14.00	34.00	185864B0103300
DN 15 ISO	78.00	21.30	18.10	34.00	185864B0153300
DN 20 ISO	78.00	26.90	23.70	50.50	185864B0203300
DN 25 ISO	88.00	33.70	29.70	50.50	185864B0253300
DN 32 ISO	88.00	42.40	38.40	64.00	185864B0323300
DN 40 ISO	90.00	48.30	44.30	64.00	185864B0403300
DN 50 ISO	114.0	60.30	56.30	91.00	185864B0503300
DN 65 ISO	117.0	76.10	72.10	106.0	185864B0653300
DN 80 ISO	122.0	88.90	84.30	130.0	185864B0803300



## Bund-Clamp Stutzen 11864-3

## Form A

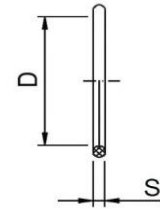
DIN	D1	D2	D3	L	L1	Art. Nr. 316L
DN 10	10.00	13.00	34.00	38.0	26.0	185B864A0103
DN 15	16.00	19.00	34.00	38.0	26.0	185B864A0153
DN 20	20.00	23.00	50.50	38.0	26.0	185B864A0203
DN 25	26.00	29.00	50.50	38.5	28.0	185B864A0253
DN 32	32.00	35.00	50.50	44.0	30.0	185B864A0323
DN 40	38.00	41.00	64.00	44.0	30.0	185B864A0403
DN 50	50.00	53.00	77.50	44.5	30.0	185B864A0503
DN 65	66.00	70.00	91.00	56.5	40.0	185B864A0653
DN 80	81.00	85.00	106.0	58.5	40.0	185B864A0803
DN 100	100.0	104.0	130.0	60.0	40.0	185B864A1003
<b>INCH</b>						
1/2"	09.40	12.70	34.00	38.0	26.0	185B864C0123
3/4"	15.75	19.05	34.00	38.0	26.0	185B864C0343
1.0"	21.10	25.40	50.50	38.5	28.0	185B864C1003
1.5"	34.80	38.10	64.00	44.0	30.0	185B864C1123
2.0"	47.50	50.80	77.50	44.5	30.0	185B864C2003
2.5"	60.20	63.50	91.00	57.5	40.0	185B864C2123
3.0"	72.90	76.20	106.0	58.5	40.0	185B864C3003
4.0"	97.38	101.6	130.0	59.5	40.0	185B864C4003
<b>ISO</b>						
DN 08 ISO	10.30	13.50	34.00	38.0	26	185B864B0083
DN 10 ISO	14.00	17.20	34.00	38.0	26	185B864B0103
DN 15 ISO	18.10	21.30	34.00	39.0	26	185B864B0153
DN 20 ISO	23.70	26.90	50.50	39.0	30	185B864B0203
DN 25 ISO	29.70	33.70	50.50	44.0	30	185B864B0253
DN 32 ISO	38.40	42.40	64.00	44.0	30	185B864B0323
DN 40 ISO	44.30	48.30	64.00	45.0	30	185B864B0403
DN 50 ISO	56.30	60.30	91.00	57.0	40	185B864B0503
DN 65 ISO	72.10	76.10	106.0	58.5	40	185B864B0653
DN 80 ISO	84.30	88.90	119.0	61.0	40	185B864B0803



## Nutmutterstutzen DIN 11864-3

## Form A

Nennweite	D1	D2	D3	L	L1	Art. Nr. 316L
DN 10	10.00	13.00	34.00	39.5	26.0	185N864A0103
DN 15	16.00	19.00	34.00	39.5	26.0	185N864A0153
DN 20	20.00	23.00	50.50	39.5	26.0	185N864A0203
DN 25	26.00	29.00	50.50	40.0	28.0	185N864A0253
DN 32	32.00	35.00	50.50	45.5	30.0	185N864A0323
DN 40	38.00	41.00	64.00	45.5	30.0	185N864A0403
DN 50	50.00	53.00	77.50	46.0	30.0	185N864A0503
DN 65	66.00	70.00	91.00	58.0	40.0	185N864A0653
DN 80	81.00	85.00	106.0	60.0	40.0	185N864A0803
DN 100	100.0	104.0	130.0	61.5	40.0	185N864A1003
<b>INCH</b>						
1/2"	09.40	12.70	34.00	39.5	26.0	185N864C0123
3/4"	15.75	19.05	34.00	39.5	26.0	185N864C0343
1.0"	21.10	25.40	50.50	50.0	28.0	185N864C1003
1.5"	34.80	38.10	64.00	45.5	30.0	185N864C1123
2.0"	47.50	50.80	77.50	46.0	30.0	185N864C2003
2.5"	60.20	63.50	91.00	59.0	40.0	185N864C2123
3.0"	72.90	76.20	106.0	60.0	40.0	185N864C3003
4.0"	97.38	101.6	130.0	61.0	40.0	185N864C4003
<b>ISO</b>						
DN 08 ISO	10.30	13.50	34.00	39.5	26	185N864B0083
DN 10 ISO	14.00	17.20	34.00	39.5	26	185N864B0103
DN 15 ISO	18.10	21.30	34.00	40.5	26	185N864B0153
DN 20 ISO	23.70	26.90	50.50	40.0	30	185N864B0203
DN 25 ISO	29.70	33.70	50.50	45.5	30	185N864B0253
DN 32 ISO	38.40	42.40	64.00	45.5	30	185N864B0323
DN 40 ISO	44.30	48.30	64.00	46.5	30	185N864B0403
DN 50 ISO	56.30	60.30	91.00	58.5	40	185N864B0503
DN 65 ISO	72.10	76.10	106.0	60.0	40	185N864B0653
DN 80 ISO	84.30	88.90	119.0	62.5	40	185N864B0803



## O-Ring DIN 11864 -11853

DIN	D	S	Art. Nr.	
			EPDM	FPM
DN 10	12.00	3.5	111864A0100300	11864A0100400
DN 15	18.00	3.5	111864A0150300	11864A0150400
DN 20	22.00	3.5	111864A0200300	11864A0200400
DN 25	28.00	3.5	111864A0250300	11864A0250400
DN 32	34.00	5.0	111864A0320300	11864A0320400
DN 40	40.00	5.0	111864A0400300	11864A0400400
DN 50	52.00	5.0	111864A0500300	11864A0500400
DN 65	68.00	5.0	111864A0650300	11864A0650400
DN 80	83.00	5.0	111864A0800300	11864A0800400
DN 100	102.0	5.0	111864A1000300	11864A1000400

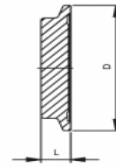
### Inch/Zoll

1/2"	12.00	3.5	111864C0120300	11864C0120400
3/4"	18.00	3.5	111864C0340300	11864C0340400
1.0"	24.00	3.5	111864C1000300	11864C1000400
1.5"	37.00	5.0	111864C1120300	11864C1120400
2.0"	50.00	5.0	111864C2000300	11864C2000400
2.5"	62.00	5.0	111864C2120300	11864C2120400
3.0"	75.00	5.0	111864C3000300	11864C3000400
4.0"	400.0	5.0	111864C4000300	11864C4000400

### ISO

DN 08 ISO	12.00	3.5	111864B0080300	11864B0080400
DN 10 ISO	16.00	3.5	111864B0100300	11864B0100400
DN 15 ISO	20.00	3.5	111864B0150300	11864B0150400
DN 20 ISO	26.00	3.5	111864B0200300	11864B0200400
DN 25 ISO	32.00	5.0	111864B0250300	11864B0250400
DN 32 ISO	40.50	5.0	111864B0320300	11864B0320400
DN 40 ISO	46.50	5.0	111864B0400300	11864B0400400
DN 50 ISO	58.50	5.0	111864B0500300	11864B0500400
DN 65 ISO	73.50	5.0	111864B0650300	11864B0650400
DN 80 ISO	85.50	5.0	111864B0800300	11864B0800400

Ook leverbaar in PTFE, HNBR en VMQ



## Blind-Bund Clampdelen DIN 11853-3

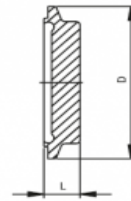
DIN	L	D	Art. Nr. 316L
DN 10	11.5	34.00	185BB853A0103
DN 15	11.5	34.00	185BB853A0153
DN 20	11.5	50.50	185BB853A0203
DN 25	11.5	50.50	185BB853A0253
DN 32	11.5	50.50	185BB853A0323
DN 40	11.5	64.00	185BB853A0403
DN 50	13.5	77.50	185BB853A0503
DN 65	13.5	91.00	185BB853A0653
DN 80	13.5	106.0	185BB853A0803
DN 100	13.5	130.0	185BB853A1003

### INCH

1/2"	11.5	34.00	185BB853C0123
3/4"	11.5	34.00	185BB853C0343
1.0"	11.5	50.50	185BB853C1003
1.5"	11.5	64.00	185BB853C1123
2.0"	13.5	77.50	185BB853C2003
2.5"	13.5	91.00	185BB853C2123
3.0"	13.5	106.0	185BB853C3003
4.0"	13.5	130.0	185BB853C4003

### ISO

DN 08 ISO	11.5	34.00	185BB853B0083
DN 10 ISO	11.5	34.00	185BB853B0103
DN 15 ISO	11.5	34.00	185BB853B0153
DN 20 ISO	11.5	50.50	185BB853B0203
DN 25 ISO	11.5	50.50	185BB853B0253
DN 32 ISO	11.5	64.00	185BB853B0323
DN 40 ISO	11.5	64.00	185BB853B0403
DN 50 ISO	13.5	91.00	185BB853B0503
DN 65 ISO	13.5	106.0	185BB853B0653
DN 80 ISO	13.5	119.0	185BB853B0803



## Blind-Nut Clampdelen DIN 11853-3

DIN	L	D	Art. Nr. 316L
DN 10	13.0	34.00	185NB853A0103
DN 15	13.0	34.00	185NB853A0153
DN 20	13.0	50.50	185NB853A0203
DN 25	13.0	50.50	185NB853A0253
DN 32	13.0	50.50	185NB853A0323
DN 40	13.0	64.00	185NB853A0403
DN 50	15.0	77.50	185NB853A0503
DN 65	15.0	91.00	185NB853A0653
DN 80	15.0	106.0	185NB853A0803
DN 100	15.0	130.0	185NB853A1003

### INCH

1/2"	13.0	34.00	185NB853C0123
3/4"	13.0	34.00	185NB853C0343
1.0"	13.0	50.50	185NB853C1003
1.5"	13.0	64.00	185NB853C1123
2.0"	15.0	77.50	185NB853C2003
2.5"	15.0	91.00	185NB853C2123
3.0"	15.0	106.0	185NB853C3003
4.0"	15.0	130.0	185NB853C4003

### ISO

DN 08 ISO	13.0	34.00	185NB853B0083
DN 10 ISO	13.0	34.00	185NB853B0103
DN 15 ISO	13.0	34.00	185NB853B0153
DN 20 ISO	13.0	50.50	185NB853B0203
DN 25 ISO	13.0	50.50	185NB853B0253
DN 32 ISO	13.0	64.00	185NB853B0323
DN 40 ISO	13.0	64.00	185NB853B0403
DN 50 ISO	13.0	91.00	185NB853B0503
DN 65 ISO	15.0	106.0	185NB853B0653
DN 80 ISO	15.0	119.0	185NB853B0803