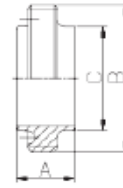




## Lasdraadstuk RJT (BS 4825)



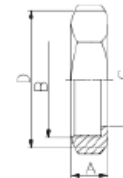
NW	A	B	C	Art. Nr.
				316L
1.00"	27.00	W45.5 x 1/8"	24.40	162631003
1.50"	27.00	W58.2 x 1,8"	38.10	162631123
2.00"	27.00	W72.5 x 1/6"	50.80	162632003
2.50"	27.00	W85,2 x 1/6"	63.50	162632123
3.00"	27.00	W97.9 x 1/6"	76.10	162633003
4.00"	27.00	W123.3 x 1/6"	101.6	162634003

## Laspuntstuk RJT (BS 4825)



NW	A	B	C	Art. Nr.
				316L
1.00"	12.70	41.40	24.40	163631003
1.50"	12.70	54.00	38.10	163631123
2.00"	12.70	66.70	50.80	163632003
2.50"	12.70	79.30	63.50	163632123
3.00"	12.70	92.10	76.10	163633003
4.00"	12.70	117.5	101.6	163634003

## 6K Wartel RJT (BS 4825)



NW	A	B	C	D	Art. Nr.
					304
1.00"	22.20	42.26	25,6	SW51	164631001
1.50"	22.20	54.96	38,3	SW65	164631121
2.00"	22.20	67.92	51	SW79	164632001
2.50"	22.20	80.82	63,7	SW92	164632121
3.00"	22.20	93.32	76,4	SW105	164633001
4.00"	22.20	118.7	101,8	SW130	164634001

## Dichtring RJT (BS 4825)



NW	A	B	Art. Nr.
			EPDM
1.00"	6.60	26.70	165611000300
1.50"	6.60	39.40	165611120300
2.00"	6.60	52.10	165612000300
2.50"	6.60	64.80	165612120300
3.00"	6.60	77.50	165613000300
4.00"	6.60	102.9	165614000300