

## Flensverbindung DIN 11853-2

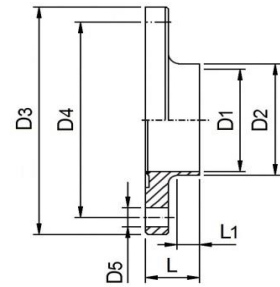
DIN	A	B	C	D	E	Art. Nr.	
						304 / EPDM	316L / EPDM
DN 10	48	13.00	10.00	37	54	145853A0101300	145853A0103300
DN 15	48	19.00	16.00	42	59	145853A0151300	145853A0153300
DN 20	48	23.00	20.00	47	64	145853A0201300	145853A0203300
DN 25	48	29.00	26.00	53	70	145853A0251300	145853A0253300
DN 32	48	35.00	32.00	59	76	145853A0321300	145853A0323300
DN 40	48	41.00	38.00	65	82	145853A0401300	145853A0403300
DN 50	48	53.00	50.00	77	94	145853A0501300	145853A0503300
DN 65	48	70.00	66.00	95	113	145853A0651300	145853A0653300
DN 80	52	85.00	81.00	112	133	145853A0801300	145853A0803300
DN 100	52	104.0	100.0	137	159	145853A1001300	145853A1003300
DN 125	56	129.0	125.0	161	183	145853A1251300	145853A1253300
DN 150	56	154.0	150.0	188	213	145853A1501300	145853A1503300

### INCH

1/2"	48	12.70	09.40	37	54	145853C0121300	145853C0123300
3/4"	48	19.05	15.75	42	59	145853C0341300	145853C0343300
1.0"	48	25.40	21.10	49	66	145853C1001300	145853C1003300
1.5"	48	38.10	34.80	62	79	145853C1121300	145853C1123300
2.0"	48	50.80	47.50	75	92	145853C2001300	145853C2003300
2.5"	48	63.50	60.20	89	107	145853C2121300	145853C2123300
3.0"	48	76.20	72.90	104	125	145853C3001300	145853C3003300
4.0"	52	101.6	97.38	135	157	145853C4001300	145853C4003300

### ISO

DN 08 ISO	48	13.50	10.30	37	54	145853B0081300	145853B0083300
DN 10 ISO	48	17.20	14.00	42	59	145853B0101300	145853B0103300
DN 15 ISO	48	21.30	18.10	45	66	145853B0151300	145853B0153300
DN 20 ISO	48	26.90	23.70	52	69	145853B0201300	145853B0203300
DN 25 ISO	48	33.70	29.70	57	74	145853B0251300	145853B0253300
DN 32 ISO	48	42.40	38.40	65	82	145853B0321300	145853B0323300
DN 40 ISO	48	48.30	44.30	71	88	145853B0401300	145853B0403300
DN 50 ISO	48	60.30	56.30	85	103	145853B0501300	145853B0503300
DN 65 ISO	48	76.10	72.10	104	125	145853B0651300	145853B0653300
DN 80 ISO	52	88.90	84.30	116	137	145853B0801300	145853B0803300
DN 100 ISO	52	114.3	109.7	146	168	145853B1001300	145853B1003300



## Bundflansch DIN 11853-2 KORT

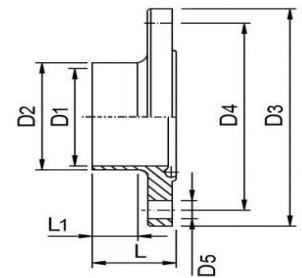
DIN	D1	D2	D3	D4	D5	L	L1	Art. Nr. 316L
DN 10	10.00	13.00	54	37	4 x Ø 9	24.0	10	145B853A0103
DN 15	16.00	19.00	59	42	4 x Ø 9	24.0	10	145B853A0153
DN 20	20.00	23.00	64	47	4 x Ø 9	24.0	10	145B853A0203
DN 25	26.00	29.00	70	53	4 x Ø 9	24.0	10	145B853A0253
DN 32	32.00	35.00	76	59	4 x Ø 9	24.0	10	145B853A0323
DN 40	38.00	41.00	82	65	4 x Ø 9	24.0	10	145B853A0403
DN 50	50.00	53.00	94	77	4 x Ø 9	24.0	10	145B853A0503
DN 65	66.00	70.00	113	95	8 x Ø 9	24.0	10	145B853A0653
DN 80	81.00	85.00	133	112	8 x Ø 11	26.0	10	145B853A0803
DN 100	100.0	104.0	159	137	8 x Ø 11	26.0	10	145B853A1003
DN 125	125.0	129.0	183	161	8 x Ø 11	28.0	10	145B853A1253
DN 150	150.0	154.0	213	188	8 x Ø 14	28.0	8	145B853A1503

### INCH

1/2"	09.40	12.70	54	37	4 x Ø 9	24.0	10	145B853C0123
3/4"	15.75	19.05	59	42	4 x Ø 9	24.0	10	145B853C0343
1.0"	21.10	25.40	66	49	4 x Ø 9	24.0	10	145B853C1003
1.5"	34.80	38.10	79	62	4 x Ø 9	24.0	10	145B853C1123
2.0"	47.50	50.80	92	75	4 x Ø 9	24.0	10	145B853C2003
2.5"	60.20	63.50	107	89	8 x Ø 9	24.0	10	145B853C2123
3.0"	72.90	76.20	125	104	8 x Ø 11	24.0	8	145B853C3003
4.0"	97.38	101.6	157	135	8 x Ø 11	26.0	8	145B853C4003

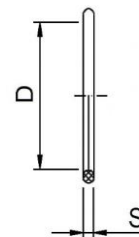
### ISO

DN 08 ISO	10.30	13.50	54	37	4 x Ø 9	24.0	10	145B853B0083
DN 10 ISO	14.00	17.20	59	42	4 x Ø 9	24.0	10	145B853B0103
DN 15 ISO	18.10	21.30	62	45	4 x Ø 9	24.0	10	145B853B0153
DN 20 ISO	23.70	26.90	69	52	4 x Ø 9	24.0	10	145B853B0203
DN 25 ISO	29.70	33.70	74	57	4 x Ø 9	24.0	10	145B853B0253
DN 32 ISO	38.40	42.40	82	65	4 x Ø 9	24.0	10	145B853B0323
DN 40 ISO	44.30	48.30	88	71	4 x Ø 9	24.0	10	145B853B0403
DN 50 ISO	56.30	60.30	103	85	8 x Ø 9	24.0	10	145B853B0503
DN 65 ISO	72.10	76.10	125	104	8 x Ø 11	24.0	8	145B853B0653
DN 80 ISO	84.30	88.90	137	116	8 x Ø 11	26.0	10	145B853B0803
DN 100 ISO	109.7	114.3	168	146	8 x Ø 11	26.0	8	145B853B1003



## Nutflansch DIN 11853-2 KORT

DIN	D1	D2	D3	D4	D5	L	L1	Art. Nr.
								316L
DN 10	10.00	13.00	54	37	4 x Ø 9	25,5	10	145N853A0103
DN 15	16.00	19.00	59	42	4 x Ø 9	25,5	10	145N853A0153
DN 20	20.00	23.00	64	47	4 x Ø 9	25,5	10	145N853A0203
DN 25	26.00	29.00	70	53	4 x Ø 9	25,5	10	145N853A0253
DN 32	32.00	35.00	76	59	4 x Ø 9	25,5	10	145N853A0323
DN 40	38.00	41.00	82	65	4 x Ø 9	25,5	10	145N853A0403
DN 50	50.00	53.00	94	77	4 x Ø 9	25,5	10	145N853A0503
DN 65	66.00	70.00	113	95	8 x Ø 9	25,5	10	145N853A0653
DN 80	81.00	85.00	133	112	8 x Ø 11	27,5	10	145N853A0803
DN 100	100.0	104.0	159	137	8 x Ø 11	27,5	10	145N853A1003
DN 125	125.0	129.0	183	161	8 x Ø 11	29,5	10	145N853A1253
DN 150	150.0	154.0	213	188	8 x Ø 14	29,5	8	145N853A1503
<b>INCH</b>								
1/2"	09.40	12.70	54	37	4 x Ø 9	25,5	10	145N853C0123
3/4"	15.75	19.05	59	42	4 x Ø 9	25,5	10	145N853C0343
1.0"	21.10	25.40	66	49	4 x Ø 9	25,5	10	145N853C1003
1.5"	34.80	38.10	79	62	4 x Ø 9	25,5	10	145N853C1123
2.0"	47.50	50.80	92	75	4 x Ø 9	25,5	10	145N853C2003
2.5"	60.20	63.50	107	89	8 x Ø 9	25,5	10	145N853C2123
3.0"	72.90	76.20	125	104	8 x Ø 11	25,5	8	145N853C3003
4.0"	97.38	101.6	157	135	8 x Ø 11	27,5	8	145N853C4003
<b>ISO</b>								
DN 08 ISO	10.30	13.50	54	37	4 x Ø 9	25,5	10	145N853B0083
DN 10 ISO	14.00	17.20	59	42	4 x Ø 9	25,5	10	145N853B0103
DN 15 ISO	18.10	21.30	62	45	4 x Ø 9	25,5	10	145N853B0153
DN 20 ISO	23.70	26.90	69	52	4 x Ø 9	25,5	10	145N853B0203
DN 25 ISO	29.70	33.70	74	57	4 x Ø 9	25,5	10	145N853B0253
DN 32 ISO	38.40	42.40	82	65	4 x Ø 9	25,5	10	145N853B0323
DN 40 ISO	44.30	48.30	88	71	4 x Ø 9	25,5	10	145N853B0403
DN 50 ISO	56.30	60.30	103	85	8 x Ø 9	25,5	10	145N853B0503
DN 65 ISO	72.10	76.10	125	104	8 x Ø 11	25,5	8	145N853B0653
DN 80 ISO	84.30	88.90	137	116	8 x Ø 11	27,5	10	145N853B0803
DN 100 ISO	109.7	114.3	168	146	8 x Ø 11	27,5	8	145N853N1003



## O-Ring DIN 11864 -11853-2

DIN	D	S	Art. Nr.	
			EPDM	FPM
DN 10	12.00	3.5	111864A0100300	111864A0100400
DN 15	18.00	3.5	111864A0150300	111864A0150400
DN 20	22.00	3.5	111864A0200300	111864A0200400
DN 25	28.00	3.5	111864A0250300	111864A0250400
DN 32	34.00	5.0	111864A0320300	111864A0320400
DN 40	40.00	5.0	111864A0400300	111864A0400400
DN 50	52.00	5.0	111864A0500300	111864A0500400
DN 65	68.00	5.0	111864A0650300	111864A0650400
DN 80	83.00	5.0	111864A0800300	111864A0800400
DN 100	102.0	5.0	111864A1000300	111864A1000400
DN 125	127.0	5.0	111864A1250300	111864A1250400
DN 150	152.0	5.0	111864A1500300	111864A1500400

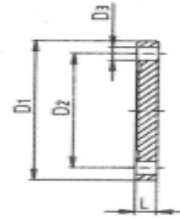
### Inch/Zoll

1/2"	12.00	3,5	111864C0120300	111864C0120400
3/4"	18.00	3,5	111864C0340300	111864C0340400
1.0"	24.00	3,5	111864C1000300	111864C1000400
1.5"	37.00	5.0	111864C1120300	111864C1120400
2.0"	50.00	5.0	111864C2000300	111864C2000400
2.5"	62.00	5.0	111864C2120300	111864C2120400
3.0"	75.00	5.0	111864C3000300	111864C3000400
4.0"	400.0	5.0	111864C4000300	111864C4000400

### ISO

DN 08 ISO	12.00	3.5	111864B0080300	111864B0080400
DN 10 ISO	16.00	3.5	111864B0100300	111864B0100400
DN 15 ISO	20.00	3.5	111864B0150300	111864B0150400
DN 20 ISO	26.00	3.5	111864B0200300	111864B0200400
DN 25 ISO	32.00	5.0	111864B0250300	111864B0250400
DN 32 ISO	40.50	5.0	111864B0320300	111864B0320400
DN 40 ISO	46.50	5.0	111864B0400300	111864B0400400
DN 50 ISO	58.50	5.0	111864B0500300	111864B0500400
DN 65 ISO	73.50	5.0	111864B0650300	111864B0650400
DN 80 ISO	85.50	5.0	111864B0800300	111864B0800400
DN 100 ISO	111.0	5.0	111864B1000300	111864B1000400

Ook leverbaar in PTFE, HNBR, VMQ en NBR



## Blindbundflens DIN 11853-2

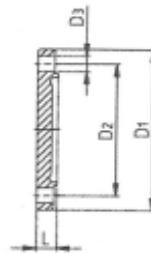
DIN	D1	D2	D3	L	Art. Nr. 316L
DN 10	54.00	37.00	4 x Ø 9	10	145BB853A0103
DN 15	59.00	42.00	4 x Ø 9	10	145BB853A0153
DN 20	64.00	47.00	4 x Ø 9	10	145BB853A0203
DN 25	70.00	53.00	4 x Ø 9	10	145BB853A0253
DN 32	76.00	59.00	4 x Ø 9	10	145BB853A0323
DN 40	82.00	65.00	4 x Ø 9	10	145BB853A0403
DN 50	94.00	77.00	4 x Ø 9	10	145BB853A0503
DN 65	113.0	95.00	8 x Ø 9	10	145BB853A0653
DN 80	133.0	112.0	8 x Ø 11	12	145BB853A0803
DN 100	159.0	137.0	8 x Ø 11	14	145BB853A1003
DN 125	183.0	161.0	8 x Ø 11	14	145BB853A1253
DN 150	213.0	188.0	8 x Ø 14	16	145BB853A1503

### Inch/Zoll

1/2"	54.00	37.00	4 x Ø 9	10	145BB853C0123
3/4"	59.00	42.00	4 x Ø 9	10	145BB853C0343
1.0"	66.00	49.00	4 x Ø 9	10	145BB853C1003
1.5"	79.00	62.00	4 x Ø 9	10	145BB853C1123
2.0"	92.00	75.00	4 x Ø 9	10	145BB853C2003
2.5"	107.0	89.00	8 x Ø 9	10	145BB853C2123
3.0"	125.0	104.0	8 x Ø 11	12	145BB853C3003
4.0"	157.0	135.0	8 x Ø 11	12	145BB853C4003

### ISO

DN 10 ISO	59.00	42.00	4 x Ø 9	10	145BB853B0103
DN 15 ISO	62.00	45.00	4 x Ø 9	10	145BB853B0153
DN 20 ISO	69.00	52.00	4 x Ø 9	10	145BB853B0203
DN 25 ISO	74.00	57.00	4 x Ø 9	10	145BB853B0253
DN 32 ISO	82.00	65.00	4 x Ø 9	10	145BB853B0323
DN 40 ISO	88.00	71.00	4 x Ø 9	10	145BB853B0403
DN 50 ISO	103.0	85.00	8 x Ø 9	10	145BB853B0503
DN 65 ISO	125.0	104.0	8 x Ø 11	12	145BB853B0653
DN 80 ISO	137.0	116.0	8 x Ø 11	12	145BB853B0803
DN 100 ISO	168.0	146.0	8 x Ø 11	14	145BB853N1003



## Blindnutflens DIN 11853-2

DIN	D1	D2	D3	L	Art. Nr.
					<b>316L</b>
DN 10	54.00	37.00	4 x Ø 9	10	145NB853A0103
DN 15	59.00	42.00	4 x Ø 9	10	145NB853A0153
DN 20	64.00	47.00	4 x Ø 9	10	145NB853A0203
DN 25	70.00	53.00	4 x Ø 9	10	145NB853A0253
DN 32	76.00	59.00	4 x Ø 9	10	145NB853A0323
DN 40	82.00	65.00	4 x Ø 9	10	145NB853A0403
DN 50	94.00	77.00	4 x Ø 9	10	145NB853A0503
DN 65	113.0	95.00	8 x Ø 9	10	145NB853A0653
DN 80	133.0	112.0	8 x Ø 11	12	145NB853A0803
DN 100	159.0	137.0	8 x Ø 11	14	145NB853A1003
DN 125	183.0	161.0	8 x Ø 11	14	145NB853A1253
DN 150	213.0	188.0	8 x Ø 14	16	145NB853A1503

### Inch/Zoll

1/2"	54.00	37.00	4 x Ø 9	10	145NB853C0123
3/4"	59.00	42.00	4 x Ø 9	10	145NB853C0343
1.0"	66.00	49.00	4 x Ø 9	10	145NB853C1003
1.5"	79.00	62.00	4 x Ø 9	10	145NB853C1123
2.0"	92.00	75.00	4 x Ø 9	10	145NB853C2003
2.5"	107.0	89.00	8 x Ø 9	10	145NB853C2123
3.0"	125.0	104.0	8 x Ø 11	12	145NB853C3003
4.0"	157.0	135.0	8 x Ø 11	12	145NB853C4003

### ISO

DN 10 ISO	59.00	42.00	4 x Ø 9	10	145NB853B0103
DN 15 ISO	62.00	45.00	4 x Ø 9	10	145NB853B0153
DN 20 ISO	69.00	52.00	4 x Ø 9	10	145NB853B0203
DN 25 ISO	74.00	57.00	4 x Ø 9	10	145NB853B0253
DN 32 ISO	82.00	65.00	4 x Ø 9	10	145NB853B0323
DN 40 ISO	88.00	71.00	4 x Ø 9	10	145NB853B0403
DN 50 ISO	103.0	85.00	8 x Ø 9	10	145NB853B0503
DN 65 ISO	125.0	104.0	8 x Ø 11	12	145NB853B0653
DN 80 ISO	137.0	116.0	8 x Ø 11	12	145NB853B0803
DN 100 ISO	168.0	146.0	8 x Ø 11	14	145NB853N1003