
**Clamp koppeling DIN 11853-3**
**Form A**

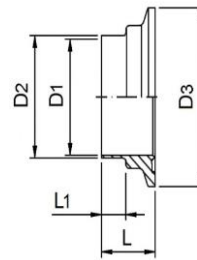
DIN	A	B	C	D	Art. Nr. 316L / EPDM
DN 10	44.00	13.00	10.00	34.00	185853A0103300
DN 15	44.00	19.00	16.00	34.00	185853A0153300
DN 20	44.00	23.00	20.00	50.50	185853A0203300
DN 25	44.00	29.00	26.00	50.50	185853A0253300
DN 32	48.00	35.00	32.00	50.50	185853A0323300
DN 40	48.00	41.00	38.00	64.00	185853A0403300
DN 50	49.00	53.00	50.00	77.50	185853A0503300
DN 65	53.00	70.00	66.00	91.00	185853A0653300
DN 80	57.00	85.00	81.00	106.0	185853A0803300
DN 100	60.00	104.0	100.0	130.0	185853A1003300

**INCH**

1/2"	44.00	12.70	09.40	34.00	185853C0123300
3/4"	44.00	19.05	15.75	34.00	185853C0343300
1.0"	44.00	25.40	21.10	50.50	185853C1003300
1.5"	48.00	38.10	34.80	64.00	185853C1123300
2.0"	49.00	50.80	47.50	77.50	185853C2003300
2.5"	55.00	63.50	60.20	91.00	185853C2123300
3.0"	57.00	76.20	72.90	106.0	185853C3003300
4.0"	59.00	101.6	97.38	130.0	185853C4003300

**ISO**

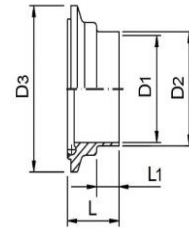
DN 08 ISO	44.00	13.50	10.30	34.00	185853B0083300
DN 10 ISO	44.00	17.20	14.00	34.00	185853B0103300
DN 15 ISO	44.00	21.30	18.10	34.00	185853B0153300
DN 20 ISO	44.00	26.90	23.70	50.50	185853B0203300
DN 25 ISO	48.00	33.70	29.70	50.50	185853B0253300
DN 32 ISO	48.00	42.40	38.40	64.00	185853B0323300
DN 40 ISO	50.00	48.30	44.30	64.00	185853B0403300
DN 50 ISO	54.00	60.30	56.30	91.00	185853B0503300
DN 65 ISO	57.00	76.10	72.10	106.0	185853B0653300
DN 80 ISO	62.00	88.90	84.30	130.0	185853B0803300



## Bund-Clamp Stutzen 11853-3

## Form A

DIN	D1	D2	D3	L	L1	Art. Nr. 316L
DN 10	10.00	13.00	34.00	22.0	10	185B853A0103
DN 15	16.00	19.00	34.00	22.0	10	185B853A0153
DN 20	20.00	23.00	50.50	22.0	10	185B853A0203
DN 25	26.00	29.00	50.50	22.0	10	185B853A0253
DN 32	32.00	35.00	50.50	24.0	10	185B853A0323
DN 40	38.00	41.00	64.00	24.0	10	185B853A0403
DN 50	50.00	53.00	77.50	24.5	10	185B853A0503
DN 65	66.00	70.00	91.00	26.5	10	185B853A0653
DN 80	81.00	85.00	106.0	28.5	10	185B853A0803
DN 100	100.0	104.0	130.0	30.0	10	185B853A1003
<b>INCH</b>						
1/2"	09.40	12.70	34.00	22.0	10	185B853C0123
3/4"	15.75	19.05	34.00	22.0	10	185B853C0343
1.0"	21.10	25.40	50.50	22.0	10	185B853C1003
1.5"	34.80	38.10	64.00	24.0	10	185B853C1123
2.0"	47.50	50.80	77.50	24.5	10	185B853C2003
2.5"	60.20	63.50	91.00	27.5	10	185B853C2123
3.0"	72.90	76.20	106.0	28.5	10	185B853C3003
4.0"	97.38	101.6	130.0	29.5	10	185B853C4003
<b>ISO</b>						
DN 08 ISO	10.30	13.50	34.00	22.0	10	185B853B0083
DN 10 ISO	14.00	17.20	34.00	22.0	10	185B853B0103
DN 15 ISO	18.10	21.30	34.00	22.0	10	185B853B0153
DN 20 ISO	23.70	26.90	50.50	22.0	10	185B853B0203
DN 25 ISO	29.70	33.70	50.50	24.0	10	185B853B0253
DN 32 ISO	38.40	42.40	64.00	24.0	10	185B853B0323
DN 40 ISO	44.30	48.30	64.00	25.0	10	185B853B0403
DN 50 ISO	56.30	60.30	91.00	27.0	10	185B853B0503
DN 65 ISO	72.10	76.10	106.0	28.5	10	185B853B0653
DN 80 ISO	84.30	88.90	119.0	31.0	10	185B853B0803



## Nutmutterstutzen DIN 11853-3

## Form A

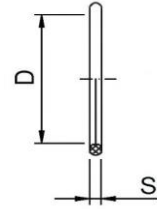
Nennweite	D1	D2	D3	L	L1	Art. Nr. 316L
DN 10	10.00	13.00	34.00	23.5	10	185N853A0103
DN 15	16.00	19.00	34.00	23.5	10	185N853A0153
DN 20	20.00	23.00	50.50	23.5	10	185N853A0203
DN 25	26.00	29.00	50.50	23.5	10	185N853A0253
DN 32	32.00	35.00	50.50	25.5	10	185N853A0323
DN 40	38.00	41.00	64.00	25.5	10	185N853A0403
DN 50	50.00	53.00	77.50	26.0	10	185N853A0503
DN 65	66.00	70.00	91.00	28.0	10	185N853A0653
DN 80	81.00	85.00	106.0	30.0	10	185N853A0803
DN 100	100.0	104.0	130.0	31.5	10	185N853A1003

### INCH

1/2"	09.40	12.70	34.00	23.5	10	185N853C0123
3/4"	15.75	19.05	34.00	23.5	10	185N853C0343
1.0"	21.10	25.40	50.50	23.5	10	185N853C1003
1.5"	34.80	38.10	64.00	25.5	10	185N853C1123
2.0"	47.50	50.80	77.50	26.0	10	185N853C2003
2.5"	60.20	63.50	91.00	29.0	10	185N853C2123
3.0"	72.90	76.20	106.0	30.0	10	185N853C3003
4.0"	97.38	101.6	130.0	31.0	10	185N853C4003

### ISO

DN 08 ISO	10.30	13.50	34.00	23.5	10	185N853B0083
DN 10 ISO	14.00	17.20	34.00	23.5	10	185N853B0103
DN 15 ISO	18.10	21.30	34.00	23.5	10	185N853B0153
DN 20 ISO	23.70	26.90	50.50	23.5	10	185N853B0203
DN 25 ISO	29.70	33.70	50.50	25.5	10	185N853B0253
DN 32 ISO	38.40	42.40	64.00	25.5	10	185N853B0323
DN 40 ISO	44.30	48.30	64.00	26.5	10	185N853B0403
DN 50 ISO	56.30	60.30	91.00	28.5	10	185N853B0503
DN 65 ISO	72.10	76.10	106.0	30.0	10	185N853B0653
DN 80 ISO	84.30	88.90	119.0	32.5	10	185N853B0803

**O-Ring DIN 11864 -11853**


DIN	D	S	Art. Nr.	
			EPDM	FPM
DN 10	12.00	3.5	111864A0100300	11864A0100400
DN 15	18.00	3.5	111864A0150300	11864A0150400
DN 20	22.00	3.5	111864A0200300	11864A0200400
DN 25	28.00	3.5	111864A0250300	11864A0250400
DN 32	34.00	5.0	111864A0320300	11864A0320400
DN 40	40.00	5.0	111864A0400300	11864A0400400
DN 50	52.00	5.0	111864A0500300	11864A0500400
DN 65	68.00	5.0	111864A0650300	11864A0650400
DN 80	83.00	5.0	111864A0800300	11864A0800400
DN 100	102.0	5.0	111864A1000300	11864A1000400

**Inch/Zoll**

1/2"	12.00	3.5	111864C0120300	11864C0120400
3/4"	18.00	3.5	111864C0340300	11864C0340400
1.0"	24.00	3.5	111864C1000300	11864C1000400
1.5"	37.00	5.0	111864C1120300	11864C1120400
2.0"	50.00	5.0	111864C2000300	11864C2000400
2.5"	62.00	5.0	111864C2120300	11864C2120400
3.0"	75.00	5.0	111864C3000300	11864C3000400
4.0"	400.0	5.0	111864C4000300	11864C4000400

**ISO**

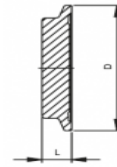
DN 08 ISO	12.00	3.5	111864B0080300	11864B0080400
DN 10 ISO	16.00	3.5	111864B0100300	11864B0100400
DN 15 ISO	20.00	3.5	111864B0150300	11864B0150400
DN 20 ISO	26.00	3.5	111864B0200300	11864B0200400
DN 25 ISO	32.00	5.0	111864B0250300	11864B0250400
DN 32 ISO	40.50	5.0	111864B0320300	11864B0320400
DN 40 ISO	46.50	5.0	111864B0400300	11864B0400400
DN 50 ISO	58.50	5.0	111864B0500300	11864B0500400
DN 65 ISO	73.50	5.0	111864B0650300	11864B0650400
DN 80 ISO	85.50	5.0	111864B0800300	11864B0800400

Ook leverbaar in PTFE, HNBR, NBR en VMQ  
 FDA CFR 177.2600 – EU 1935 /2004



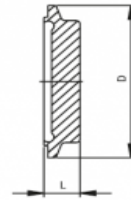
**MULDER**  
STAINLESS

YOUR SANITARY FITTINGS & PIPE CLIPS SUPPLIER



## Blind-Bund Clampdelen DIN 11853-3

DIN	L	D	Art. Nr. 316L
DN 10	11.5	34.00	185BB853A0103
DN 15	11.5	34.00	185BB853A0153
DN 20	11.5	50.50	185BB853A0203
DN 25	11.5	50.50	185BB853A0253
DN 32	11.5	50.50	185BB853A0323
DN 40	11.5	64.00	185BB853A0403
DN 50	13.5	77.50	185BB853A0503
DN 65	13.5	91.00	185BB853A0653
DN 80	13.5	106.0	185BB853A0803
DN 100	13.5	130.0	185BB853A1003
<b>INCH</b>			
1/2"	11.5	34.00	185BB853C0123
3/4"	11.5	34.00	185BB853C0343
1.0"	11.5	50.50	185BB853C1003
1.5"	11.5	64.00	185BB853C1123
2.0"	13.5	77.50	185BB853C2003
2.5"	13.5	91.00	185BB853C2123
3.0"	13.5	106.0	185BB853C3003
4.0"	13.5	130.0	185BB853C4003
<b>ISO</b>			
DN 08 ISO	11.5	34.00	185BB853B0083
DN 10 ISO	11.5	34.00	185BB853B0103
DN 15 ISO	11.5	34.00	185BB853B0153
DN 20 ISO	11.5	50.50	185BB853B0203
DN 25 ISO	11.5	50.50	185BB853B0253
DN 32 ISO	11.5	64.00	185BB853B0323
DN 40 ISO	11.5	64.00	185BB853B0403
DN 50 ISO	13.5	91.00	185BB853B0503
DN 65 ISO	13.5	106.0	185BB853B0653
DN 80 ISO	13.5	119.0	185BB853B0803



## Blind-Nut Clampdelen DIN 11853-3

DIN	L	D	Art. Nr. 316L
DN 10	13.0	34.00	185NB853A0103
DN 15	13.0	34.00	185NB853A0153
DN 20	13.0	50.50	185NB853A0203
DN 25	13.0	50.50	185NB853A0253
DN 32	13.0	50.50	185NB853A0323
DN 40	13.0	64.00	185NB853A0403
DN 50	15.0	77.50	185NB853A0503
DN 65	15.0	91.00	185NB853A0653
DN 80	15.0	106.0	185NB853A0803
DN 100	15.0	130.0	185NB853A1003

### INCH

1/2"	13.0	34.00	185NB853C0123
3/4"	13.0	34.00	185NB853C0343
1.0"	13.0	50.50	185NB853C1003
1.5"	13.0	64.00	185NB853C1123
2.0"	15.0	77.50	185NB853C2003
2.5"	15.0	91.00	185NB853C2123
3.0"	15.0	106.0	185NB853C3003
4.0"	15.0	130.0	185NB853C4003

### ISO

DN 08 ISO	13.0	34.00	185NB853B0083
DN 10 ISO	13.0	34.00	185NB853B0103
DN 15 ISO	13.0	34.00	185NB853B0153
DN 20 ISO	13.0	50.50	185NB853B0203
DN 25 ISO	13.0	50.50	185NB853B0253
DN 32 ISO	13.0	64.00	185NB853B0323
DN 40 ISO	13.0	64.00	185NB853B0403
DN 50 ISO	13.0	91.00	185NB853B0503
DN 65 ISO	15.0	106.0	185NB853B0653
DN 80 ISO	15.0	119.0	185NB853B0803