

Flensverbindung DIN 11864-2-A

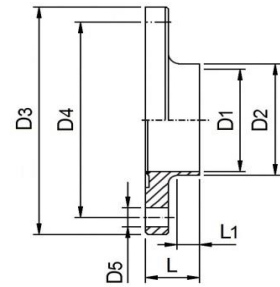
DIN	A	B	C	D	E	Art. Nr. 316L / EPDM
DN 10	80	13.00	10.00	37	54	145864A0103300
DN 15	80	19.00	16.00	42	59	145864A0153300
DN 20	80	23.00	20.00	47	64	145864A0203300
DN 25	80	29.00	26.00	53	70	145864A0253300
DN 32	90	35.00	32.00	59	76	145864A0323300
DN 40	90	41.00	38.00	65	82	145864A0403300
DN 50	90	53.00	50.00	77	94	145864A0503300
DN 65	108	70.00	66.00	95	113	145864A0653300
DN 80	116	85.00	81.00	112	133	145864A0803300
DN 100	116	104.0	100.0	137	159	145864A1003300
DN 125	120	129.0	125.0	161	183	145864A1253300
DN 150	120	154.0	150.0	188	213	145864A1503300

INCH

INCH	A	B	C	D	E	Art. Nr. 316L / EPDM
1/2"	80	12.70	09.40	37	54	145864C0123300
3/4"	80	19.05	15.75	42	59	145864C0343300
1.0"	80	25.40	21.10	49	66	145864C1003300
1.5"	90	38.10	34.80	62	79	145864C1123300
2.0"	90	50.80	47.50	75	92	145864C2003300
2.5"	108	63.50	60.20	89	107	145864C2123300
3.0"	112	76.20	72.90	104	125	145864C3003300
4.0"	116	101.6	97.38	135	157	145864C4003300

ISO

ISO	A	B	C	D	E	Art. Nr. 316L / EPDM
DN 08 ISO	80	13.50	10.30	37	54	145864B0083300
DN 10 ISO	80	17.20	14.00	42	59	145864B0103300
DN 15 ISO	80	21.30	18.10	45	66	145864B0153300
DN 20 ISO	80	26.90	23.70	52	69	145864B0203300
DN 25 ISO	90	33.70	29.70	57	74	145864B0253300
DN 32 ISO	90	42.40	38.40	65	82	145864B0323300
DN 40 ISO	90	48.30	44.30	71	88	145864B0403300
DN 50 ISO	108	60.30	56.30	85	103	145864B0503300
DN 65 ISO	112	76.10	72.10	104	125	145864B0653300
DN 80 ISO	116	88.90	84.30	116	137	145864B0803300
DN 100 ISO	116	114.3	109.7	146	168	145864B1003300



Bundflansch DIN 11864-2 LANG

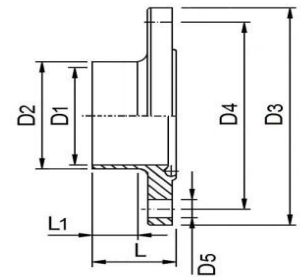
DIN	D1	D2	D3	D4	D5	L	L1	Art. Nr. 316L
DN 10	10.00	13.00	54	37	4 x Ø 9	40	26	145B864A0103
DN 15	16.00	19.00	59	42	4 x Ø 9	40	26	145B864A0153
DN 20	20.00	23.00	64	47	4 x Ø 9	40	26	145B864A0203
DN 25	26.00	29.00	70	53	4 x Ø 9	40	26	145B864A0253
DN 32	32.00	35.00	76	59	4 x Ø 9	45	31	145B864A0323
DN 40	38.00	41.00	82	65	4 x Ø 9	45	31	145B864A0403
DN 50	50.00	53.00	94	77	4 x Ø 9	45	31	145B864A0503
DN 65	66.00	70.00	113	95	8 x Ø 9	54	42	145B864A0653
DN 80	81.00	85.00	133	112	8 x Ø 11	58	42	145B864A0803
DN 100	100.0	104.0	159	137	8 x Ø 11	58	42	145B864A1003
DN 125	125.0	129.0	183	161	8 x Ø 11	60	42	145B864A1253
DN 150	150.0	154.0	213	188	8 x Ø 14	60	40	145B864A1503

INCH

1/2"	09.40	12.70	54	37	4 x Ø 9	40	26	145B864C0123
3/4"	15.75	19.05	59	42	4 x Ø 9	40	26	145B864C0343
1.0"	21.10	25.40	66	49	4 x Ø 9	40	26	145B864C1003
1.5"	34.80	38.10	79	62	4 x Ø 9	45	31	145B864C1123
2.0"	47.50	50.80	92	75	4 x Ø 9	45	31	145B864C2003
2.5"	60.20	63.50	107	89	8 x Ø 9	54	42	145B864C2123
3.0"	72.90	76.20	125	104	8 x Ø 11	56	42	145B864C3003
4.0"	97.38	101.6	157	135	8 x Ø 11	58	42	145B864C4003

ISO

DN 08 ISO	10.30	13.50	54	37	4 x Ø 9	40	26	145B864B0083
DN 10 ISO	14.00	17.20	59	42	4 x Ø 9	40	26	145B864B0103
DN 15 ISO	18.10	21.30	62	45	4 x Ø 9	40	26	145B864B0153
DN 20 ISO	23.70	26.90	69	52	4 x Ø 9	40	26	145B864B0203
DN 25 ISO	29.70	33.70	74	57	4 x Ø 9	45	31	145B864B0253
DN 32 ISO	38.40	42.40	82	65	4 x Ø 9	45	31	145B864B0323
DN 40 ISO	44.30	48.30	88	71	4 x Ø 9	45	31	145B864B0403
DN 50 ISO	56.30	60.30	103	85	8 x Ø 9	54	42	145B864B0503
DN 65 ISO	72.10	76.10	125	104	8 x Ø 11	56	42	145B864B0653
DN 80 ISO	84.30	88.90	137	116	8 x Ø 11	58	42	145B864B0803
DN 100 ISO	109.7	114.3	168	146	8 x Ø 11	58	42	145B864B1003



Nutflansch DIN 11864-2 LANG

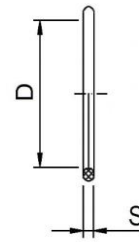
DIN	D1	D2	D3	D4	D5	L	L1	Art. Nr.
DN 10	10.00	13.00	54	37	4 x Ø 9	41,5	26	145N864A0103
DN 15	16.00	19.00	59	42	4 x Ø 9	41,5	26	145N864A0153
DN 20	20.00	23.00	64	47	4 x Ø 9	41,5	26	145N864A0203
DN 25	26.00	29.00	70	53	4 x Ø 9	41,5	26	145N864A0253
DN 32	32.00	35.00	76	59	4 x Ø 9	46,5	31	145N864A0323
DN 40	38.00	41.00	82	65	4 x Ø 9	46,5	31	145N864A0403
DN 50	50.00	53.00	94	77	4 x Ø 9	46,5	31	145N864A0503
DN 65	66.00	70.00	113	95	8 x Ø 9	55,5	42	145N864A0653
DN 80	81.00	85.00	133	112	8 x Ø 11	59,5	42	145N864A0803
DN 100	100.0	104.0	159	137	8 x Ø 11	59,5	42	145N864A1003
DN 125	125.0	129.0	183	161	8 x Ø 11	61,5	42	145N864A1253
DN 150	150.0	154.0	213	188	8 x Ø 14	61,5	40	145N864A1503

INCH

1/2"	09.40	12.70	54	37	4 x Ø 9	41,5	26	145N864C0123
3/4"	15.75	19.05	59	42	4 x Ø 9	41,5	26	145N864C0343
1.0"	21.10	25.40	66	49	4 x Ø 9	41,5	26	145N864C1003
1.5"	34.80	38.10	79	62	4 x Ø 9	46,5	31	145N864C1123
2.0"	47.50	50.80	92	75	4 x Ø 9	46,5	31	145N864C2003
2.5"	60.20	63.50	107	89	8 x Ø 9	55,5	42	145N864C2123
3.0"	72.90	76.20	125	104	8 x Ø 11	57,5	42	145N864C3003
4.0"	97.38	101.6	157	135	8 x Ø 11	59,5	42	145N864C4003

ISO

DN 08 ISO	10.30	13.50	54	37	4 x Ø 9	41,5	26	145N864B0083
DN 10 ISO	14.00	17.20	59	42	4 x Ø 9	41,5	26	145N864B0103
DN 15 ISO	18.10	21.30	62	45	4 x Ø 9	41,5	26	145N864B0153
DN 20 ISO	23.70	26.90	69	52	4 x Ø 9	41,5	26	145N864B0203
DN 25 ISO	29.70	33.70	74	57	4 x Ø 9	46,5	31	145N864B0253
DN 32 ISO	38.40	42.40	82	65	4 x Ø 9	46,5	31	145N864B0323
DN 40 ISO	44.30	48.30	88	71	4 x Ø 9	46,5	31	145N864B0403
DN 50 ISO	56.30	60.30	103	85	8 x Ø 9	55,5	42	145N864B0503
DN 65 ISO	72.10	76.10	125	104	8 x Ø 11	57,5	42	145N864B0653
DN 80 ISO	84.30	88.90	137	116	8 x Ø 11	59,5	42	145N864B0803
DN 100 ISO	109.7	114.3	168	146	8 x Ø 11	59,5	42	145N864N1003



O-Ring DIN 11864 -11853-2

DIN	D	S	Art. Nr.	
			EPDM	FPM
DN 10	12.00	3.5	111864A0100300	111864A0100400
DN 15	18.00	3.5	111864A0150300	111864A0150400
DN 20	22.00	3.5	111864A0200300	111864A0200400
DN 25	28.00	3.5	111864A0250300	111864A0250400
DN 32	34.00	5.0	111864A0320300	111864A0320400
DN 40	40.00	5.0	111864A0400300	111864A0400400
DN 50	52.00	5.0	111864A0500300	111864A0500400
DN 65	68.00	5.0	111864A0650300	111864A0650400
DN 80	83.00	5.0	111864A0800300	111864A0800400
DN 100	102.0	5.0	111864A1000300	111864A1000400
DN 125	127.0	5.0	111864A1250300	111864A1250400
DN 150	152.0	5.0	111864A1500300	111864A1500400

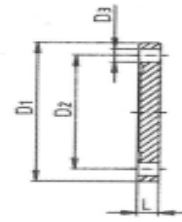
Inch/Zoll

1/2"	12.00	3,5	111864C0120300	111864C0120400
3/4"	18.00	3,5	111864C0340300	111864C0340400
1.0"	24.00	3,5	111864C1000300	111864C1000400
1.5"	37.00	5.0	111864C1120300	111864C1120400
2.0"	50.00	5.0	111864C2000300	111864C2000400
2.5"	62.00	5.0	111864C2120300	111864C2120400
3.0"	75.00	5.0	111864C3000300	111864C3000400
4.0"	400.0	5.0	111864C4000300	111864C4000400

ISO

DN 08 ISO	12.00	3.5	111864B0080300	111864B0080400
DN 10 ISO	16.00	3.5	111864B0100300	111864B0100400
DN 15 ISO	20.00	3.5	111864B0150300	111864B0150400
DN 20 ISO	26.00	3.5	111864B0200300	111864B0200400
DN 25 ISO	32.00	5.0	111864B0250300	111864B0250400
DN 32 ISO	40.50	5.0	111864B0320300	111864B0320400
DN 40 ISO	46.50	5.0	111864B0400300	111864B0400400
DN 50 ISO	58.50	5.0	111864B0500300	111864B0500400
DN 65 ISO	73.50	5.0	111864B0650300	111864B0650400
DN 80 ISO	85.50	5.0	111864B0800300	111864B0800400
DN 100 ISO	111.0	5.0	111864B1000300	111864B1000400

Ook leverbaar in PTFE, HNBR, NBR en VMQ
FDA CFR 177.2600 – EU 1935 /2004



Blindbundflens DIN 11864-2

Blindbundflens DIN 11853-2

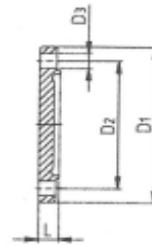
DIN	D1	D2	D3	L	Art. Nr.
316L					
DN 10	54.00	37.00	4 x Ø 9	10	145BB864A0103
DN 15	59.00	42.00	4 x Ø 9	10	145BB864A0153
DN 20	64.00	47.00	4 x Ø 9	10	145BB864A0203
DN 25	70.00	53.00	4 x Ø 9	10	145BB864A0253
DN 32	76.00	59.00	4 x Ø 9	10	145BB864A0323
DN 40	82.00	65.00	4 x Ø 9	10	145BB864A0403
DN 50	94.00	77.00	4 x Ø 9	10	145BB864A0503
DN 65	113.0	95.00	8 x Ø 9	10	145BB864A0653
DN 80	133.0	112.0	8 x Ø 11	12	145BB864A0803
DN 100	159.0	137.0	8 x Ø 11	14	145BB864A1003
DN 125	183.0	161.0	8 x Ø 11	14	145BB864A1253
DN 150	213.0	188.0	8 x Ø 14	16	145BB864A1503

Inch/Zoll

1/2"	54.00	37.00	4 x Ø 9	10	145BB864C0123
3/4"	59.00	42.00	4 x Ø 9	10	145BB864C0343
1.0"	66.00	49.00	4 x Ø 9	10	145BB864C1003
1.5"	79.00	62.00	4 x Ø 9	10	145BB864C1123
2.0"	92.00	75.00	4 x Ø 9	10	145BB864C2003
2.5"	107.0	89.00	8 x Ø 9	10	145BB864C2123
3.0"	125.0	104.0	8 x Ø 11	12	145BB864C3003
4.0"	157.0	135.0	8 x Ø 11	12	145BB864C4003

ISO

DN 10 ISO	59.00	42.00	4 x Ø 9	10	145BB864B0103
DN 15 ISO	62.00	45.00	4 x Ø 9	10	145BB864B0153
DN 20 ISO	69.00	52.00	4 x Ø 9	10	145BB864B0203
DN 25 ISO	74.00	57.00	4 x Ø 9	10	145BB864B0253
DN 32 ISO	82.00	65.00	4 x Ø 9	10	145BB864B0323
DN 40 ISO	88.00	71.00	4 x Ø 9	10	145BB864B0403
DN 50 ISO	103.0	85.00	8 x Ø 9	10	145BB864B0503
DN 65 ISO	125.0	104.0	8 x Ø 11	12	145BB864B0653
DN 80 ISO	137.0	116.0	8 x Ø 11	12	145BB864B0803
DN 100 ISO	168.0	146.0	8 x Ø 11	14	145BB864N1003



Blindnutflens DIN 11864-2

Blindnutflens DIN 11853-2

DIN	D1	D2	D3	L	Art. Nr.
316L					
DN 10	54.00	37.00	4 x Ø 9	10	145NB853A0103
DN 15	59.00	42.00	4 x Ø 9	10	145NB853A0153
DN 20	64.00	47.00	4 x Ø 9	10	145NB853A0203
DN 25	70.00	53.00	4 x Ø 9	10	145NB853A0253
DN 32	76.00	59.00	4 x Ø 9	10	145NB853A0323
DN 40	82.00	65.00	4 x Ø 9	10	145NB853A0403
DN 50	94.00	77.00	4 x Ø 9	10	145NB853A0503
DN 65	113.0	95.00	8 x Ø 9	10	145NB853A0653
DN 80	133.0	112.0	8 x Ø 11	12	145NB853A0803
DN 100	159.0	137.0	8 x Ø 11	14	145NB853A1003
DN 125	183.0	161.0	8 x Ø 11	14	145NB853A1253
DN 150	213.0	188.0	8 x Ø 14	16	145NB853A1503

Inch/Zoll

1/2"	54.00	37.00	4 x Ø 9	10	145NB853C0123
3/4"	59.00	42.00	4 x Ø 9	10	145NB853C0343
1.0"	66.00	49.00	4 x Ø 9	10	145NB853C1003
1.5"	79.00	62.00	4 x Ø 9	10	145NB853C1123
2.0"	92.00	75.00	4 x Ø 9	10	145NB853C2003
2.5"	107.0	89.00	8 x Ø 9	10	145NB853C2123
3.0"	125.0	104.0	8 x Ø 11	12	145NB853C3003
4.0"	157.0	135.0	8 x Ø 11	12	145NB853C4003

ISO

DN 10 ISO	59.00	42.00	4 x Ø 9	10	145NB853B0103
DN 15 ISO	62.00	45.00	4 x Ø 9	10	145NB853B0153
DN 20 ISO	69.00	52.00	4 x Ø 9	10	145NB853B0203
DN 25 ISO	74.00	57.00	4 x Ø 9	10	145NB853B0253
DN 32 ISO	82.00	65.00	4 x Ø 9	10	145NB853B0323
DN 40 ISO	88.00	71.00	4 x Ø 9	10	145NB853B0403
DN 50 ISO	103.0	85.00	8 x Ø 9	10	145NB853B0503
DN 65 ISO	125.0	104.0	8 x Ø 11	12	145NB853B0653
DN 80 ISO	137.0	116.0	8 x Ø 11	12	145NB853B0803
DN 100 ISO	168.0	146.0	8 x Ø 11	14	145NB853N1003